



Manoharbai Shikshan Prasarak Mandal Armori's

**MAHATMA GANDHI ARTS, SCIENCE &
LATE NASARUDDINBHAI PANJWANI COMMERCE
COLLEGE, ARMORI**

Dist. Gadchiroli (Maharashtra) 441 208

Affiliated to Gondwana University, Gadchiroli.

Re-accredited by NAAC 'A' with 3.24 CGPA

ANNUAL QUALITY ASSURANCE REPORT

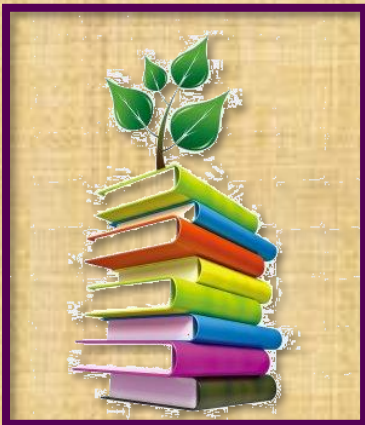
AQAR : 2023~2024

CRITERION – I

CURRICULAR ASPECTS

METRIC NO: ~ 1.3.1.

METRIC NAME: ~Institution integrates crosscutting issues relevant to Professional Ethics, Gender, Human Values, Environment and Sustainability into the Curriculum



**Web: - mgcollegearmori.ac.in
e-mail: - mgcollege.armori@gmail.com
Phone: - 07137-266558**

AQAR :2023-24: Criteria-I – Curricular Aspects



MANOHARBHAI SHIKSHAN PRASARAK MANDAL ARMORI'S
**MAHATMA GANDHI ARTS, SCIENCE &
LATE NASARUDDINBHAI PANJWANI COMMERCE COLLEGE**



ARMORI Dist. Gadchiroli (M.S.) 441 208
Affiliated to Gondwana University, Gadchiroli
Re-accredited by NAAC 'A' with 3.24 CGPA (2022)
Web: mgcollegearmori.ac.in

Dr. Lalsingh H. Khalsa
Principal & IQAC Chairman
Mob. No. 9422153197
E-mail: lalsinghkhalsa@yahoo.com

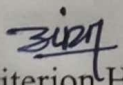
Dr. Satish. S. Kola
IQAC Coordinator
Mob. 9595982057
E-mail: satish.kolawar@gmail.com

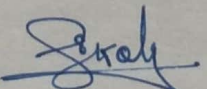
Certificate of Verification


The document herewith is a testimonial of the following specifics;

- AQAR 2023-24
- Criterion - I (Curricular Aspects)
- Metric no. – 1.3.1
- Metric Particular – Institution integrates crosscutting issues relevant to Professional Ethics, Gender, Human Values, Environment and Sustainability into the Curriculum.

It is affirmed that the attached document pertinent to the above cited specifics are duly verified and approved by the IQAC.


Criterion Head


IQAC Coordinator
IQAC-Co-ordinator


IQAC Chairperson
PRINCIPAL
M.G. Arts, Science &
Late N.P. Commerce College
ARMORI, Dist. Gadchiroli




The list and description of courses which address the Professional Ethics, Gender, Human Values, Environment and Sustainability into the Curriculum.

Sr. No.	Programme	Course	Topics/ Syllabus	Cross Cutting Issues
1)	B.A., B. Com, B.Sc.	Compulsory English, Marathi, Hindi	All Topics	Human Values, Gender, Environment sustainability and Professional Ethics
2)	B.A., B. Com, B.Sc.	Compulsory course on environmental studies.	All Topics	Environment and sustainability
3)	B.A. Sem II B.Sc. Sem IV And B.Com. Sem IV	A skill enhancement compulsory course in Democracy, Elections and good governance.	All Topics	Human Values and Professional Ethics
4)	B.A Sem III	sociology	Indian Society: The Structural Issues (Issues and Problems)	Gender and Human Values
5)	B.A Sem IV	sociology	Social Problems in contemporary India	Gender and Human Values
6)	B.A. Sem III	political Science	Theories of Social Change	Gender and Human Values
7)	B.A. Sem III	Geography	Geomorphology	Environment and sustainability
8)	B.A. Sem IV	Geography	Geomorphology and Oceanography	Environment and sustainability
9)	B.Sc. Sem II Paper V	Microbiology	Water microbiology, sewage microbiology and milk borne diseases	Environmental issues
10)	B.Sc. Sem, I Paper II	Biology	Biodiversity and its conservation, Environmental biology	Environmental issues
11)	B. Com Sem II	Principle of Management, Business ethics and social responsibility	All Topics	Human values and Ethics
12)	M.A. History	Paper II	All Topics	Human Values and Ethics
13)	M.A. Marathi	All Papers	All Topics	Human Values and Ethics
14)	M.A. Sociology	Paper IV (Sem I)	Leadership & Social Movements in India	Human Values and Professional Ethics
15)	M.Sc. Maths	Operation Research-I (Sem. III)	Transportation Problem	Professional Ethics

16)	M.Sc. Zoology	Paper I (Sem. IV)	All Topics	Environment and sustainability
17)	M.Sc. Chemistry	Organic Chemistry (Sem II)	Green Chemistry	Environment and sustainability
18)	M.Sc. Geology	Paper III (Environmental Geology)	All Topics	Environment and sustainability




 P. P. Prasad
 Mahatma Gandhi Arts,
 Science & Late
 N. P. Commerce College,
 Armori, Dist - Gatchiroli

**MAHATMA GANDHI ARTS, SCIENCE AND LATE N. P. COMMERCE COLLEGE, ARMORI
(AFFILIATED TO GONDWANA UNIVERSITY, GADCHIROLI)**

SYLLABUS (CBCS)

BACHELOR OF ARTS

ALL SUBJECTS	FYBA	https://unigug.ac.in/portal/web_site_attachment/files/New%20Syllabus%20B.%20A.%20Sem%20-I%20%26%20II%20.pdf
	SYBA	https://unigug.ac.in/portal/web_site_attachment/files/B.A.%20CBCS%20III%20%26%20IV%20Update%20180719.pdf
	TYBA	https://unigug.ac.in/portal/web_site_attachment/files/B_A_%20syllabus%20V%26VI%20sem%20221119.pdf

MASTER OF ARTS

HISTORY	M.A. I	https://unigug.ac.in/portal/web_site_attachment/files/M_A%20CBCS%20%20I%20%26II%20sem%20%202019-20.pdf
	M.A. II	https://unigug.ac.in/portal/web_site_attachment/files/Syllabus%20III%20%26%20IV.pdf
ECONOMICS	M.A. I	https://unigug.ac.in/portal/web_site_attachment/files/MA%20Eco%20CBCS%20SemI%20and%20II%20150617.pdf
	M.A. II	https://unigug.ac.in/portal/web_site_attachment/files/Syllabus%20III%20%26%20IV.pdf
MARATHI	M.A. I	https://unigug.ac.in/portal/web_site_attachment/files/MA%20MARATH%20CBCS%20Sem%20I%20and%20II%20150617.pdf
	M.A. II	https://unigug.ac.in/portal/web_site_attachment/files/CBCS%20M_A_%20Marathi%20SemIII%20and%20Sem%20IV.pdf
SOCIOLOGY	M.A. I	https://unigug.ac.in/portal/web_site_attachment/files/socialogy%20sem%20I_SEM-II%20socialogy.pdf
	M.A. II	https://unigug.ac.in/portal/web_site_attachment/files/MA%20Soc%20CNCS%20Sem%20III%20and%20IV(1).pdf

BACHELOR OF COMMERCE

ALL SUBJECTS	FYBCOM	https://unigug.ac.in/portal/web_site_attachment/files/CBCS%20BCOM%20Sem%20I%20%26%20II.pdf
	SYBCOM	https://unigug.ac.in/portal/web_site_attachment/files/BCOM%20Sem%20III%20CBCS(1).pdf
	TYBCOM	https://unigug.ac.in/portal/web_site_attachment/files/B%20Com_Sem%20V_VI.pdf

BACHELOR OF SCIENCE & MASTER OF SCIENCE

LANGUAGES	FYBSC (ENG)	https://unigug.ac.in/portal/web_site_attachment/files/BCom%20Sem%20I%20and%20II%20Comp%20Eng.pdf
	FYBSC (MAR)	https://unigug.ac.in/portal/web_site_attachment/files/BCom%20Sem%20I%20and%20II%20Comp%20Marathi.pdf
	FYBSC (HINDI)	https://unigug.ac.in/portal/web_site_attachment/files/BSc%20Sem%20I%20and%20II%20Hindi.pdf
CHEMISTRY	FYBSC	https://unigug.ac.in/portal/web_site_attachment/files/Chemistry%20Sem%20I%20and%20II%20120617.pdf
	SYBSC	https://unigug.ac.in/portal/web_site_attachment/files/BSc_Chemistry%20Sem%20III%20and%20IV%20CBCS.pdf
	TYBSC	https://unigug.ac.in/portal/web_site_attachment/files/Chemistry%20%20SYLLABUS%20%20final%2031-05-19.pdf
	MSC I	https://unigug.ac.in/portal/web_site_attachment/files/Chemistry%20I%20and%20II%20130617.pdf
	MSC II	https://unigug.ac.in/portal/web_site_attachment/files/MSc%20Chemistry%20CBCS%20Sem%20III%20and%20IV.pdf
ZOOLOGY	FYBSC	https://unigug.ac.in/portal/web_site_attachment/files/Zoology - Sem I and II- PDF converted-converted_1_.pdf
	SYBSC	https://unigug.ac.in/portal/web_site_attachment/files/BSc%20Zoology%20Sem%20III%20%26%20IV%20CBCS.pdf
	TYBSC	https://unigug.ac.in/portal/web_site_attachment/files/Zoology-CBCS- Syllabus for Sem V and Sem VI.pdf
	MSC I	https://unigug.ac.in/portal/web_site_attachment/files/Zoology%20Sem%20I%20and%20II%20130617.pdf
	MSC II	https://unigug.ac.in/portal/web_site_attachment/files/CBCS%20Syllabus%20for%20M_%20Sc_%20ZoologySem%20I%20to%20IV.pdf
MATHEMATICS	FYBSC	https://unigug.ac.in/portal/web_site_attachment/files/BSc%20Mathematics%20Sem%20I%20and%20II%20070817.pdf
	SYBSC	https://unigug.ac.in/portal/web_site_attachment/files/BSc%20botany%20semIII%20%26%20IV%20CBCS.pdf
	TYBSC	https://unigug.ac.in/portal/web_site_attachment/files/B_Sc_%20Botany%20V%20%26%20VI.PDF
	MSC I	https://unigug.ac.in/portal/web_site_attachment/files/GUG%20Sem%20I%20%26%20II-%20Final%20Final%20Syllabus.pdf
	MSC II	https://unigug.ac.in/portal/web_site_attachment/files/GUG%20Sem%20III%20and%20IV%20Final%20Final%20Syllabus.pdf
GEOLOGY	FYBSC	https://unigug.ac.in/portal/web_site_attachment/files/Geology%20Sem%20I%20and%20II%20120617.pdf
	SYBSC	https://unigug.ac.in/portal/web_site_attachment/files/BSc%20Geology%20SEM%20III%20%26%20IV%20CBCS.pdf
	TYBSC	https://unigug.ac.in/portal/web_site_attachment/files/GeologySemV_VI.pdf
	MSC I	https://unigug.ac.in/portal/web_site_attachment/files/Geology%20I%20and%20II%20130617.pdf
	MSC II	https://unigug.ac.in/portal/web_site_attachment/files/MSc%20Geology%20CBCS%20Sem%20III%20and%20IV%20150717.pdf
BOTANY	FYBSC	https://unigug.ac.in/portal/web_site_attachment/files/B.Sc.%20Botany%20I%20%26%20II.PDF

**MAHATMA GANDHI ARTS, SCIENCE AND LATE N. P. COMMERCE COLLEGE, ARMORI
(AFFILIATED TO GONDWANA UNIVERSITY, GADCHIROLI)**

SYLLABUS (NEP - 2020)

MASTER OF ARTS		
HISTORY	M.A. I	https://unigug.ac.in/portal/web_site_attachment/files/History(1).pdf
ECONOMICS	M.A. I	https://unigug.ac.in/portal/web_site_attachment/files/Syllabus%20M A %20%20Eco%20NEP%202020%20New%201%20(1).pdf
MARATHI	M.A. I	https://unigug.ac.in/portal/web_site_attachment/files/New%20Marathi%20Syllabus%2001.pdf
SOCIOLOGY	M.A. I	https://unigug.ac.in/portal/web_site_attachment/files/M %20A %20Sociology.pdf

MASTER OF SCIENCE		
CHEMISTRY	M.Sc. I	https://unigug.ac.in/portal/web_site_attachment/files/M Sc %20Chemistry%20NEP%20SEM%20I%20%26%20II.pdf
ZOOLOGY	M.Sc. I	https://unigug.ac.in/portal/web_site_attachment/files/Zoology%20Syllabus%20M Sc%20Semester%20I%20and%20II%20(NEP)%202023-24.pdf
MATHEMATICS	M.Sc. I	https://unigug.ac.in/portal/web_site_attachment/files/M Sc %20Mathematics%20NEP%202020%20final%20syllabus%20to%20nilesh.pdf
GEOLOGY	M.Sc. I	https://unigug.ac.in/portal/web_site_attachment/files/Geology%20Sem%20I%20%26%20II%20Syllabus%20NEP.pdf